

PATENT
EP1 190 815



COMPENSATING CHUCKS

OVEKA & KA



Information on
guarantees:
[SwissChuck.com/warranty](https://www.SwissChuck.com/warranty)



COMPENSATING CHUCKS

For centric cylindrical, orbital pin or form grinding of complex shaft-type components, the workpiece is generally ground between centers. The challenge faced by the workholding device is to transfer the necessary torque, and thus the rotational movement to the workpiece, without deforming it by excessive lateral loads. SwissChuck's high-precision OVEKA/KA compensating chucks have been originally designed for the machining of crankshafts, a task for which they have amply proven themselves. Over the years, these chucks have undergone continuous improvements such that today, they are perfectly suited for the grinding of all shaft-type workpieces.

These chucks have been designed in such a way that the actual clamping force is not applied until all of the chuck's jaws are sitting flush against the workpiece's clamping location. The highly sensitive compensation mechanism effortlessly equalizes any workpiece related non-concentricity in the area of the clamping location.

The compact design allows an optimal utilization of the machine tool's overall distance between centers. For this reason, OVEKA/KA compensating chucks are the ideal interface between the workpiece and the machine tool spindle when grinding between centers.

To meet the high demands in terms of process stability, the SwissChuck compensating chucks are hermetically sealed against contamination.

The hydraulically actuated **chuck series Type OVEKA** has been equipped with a patented circulating lubrication system (EP1 190 815). All the chuck's internal components are actively lubricated during each clamping process. As a consequence, these practically maintenance-free workholding devices lead to minimal lifecycle costs. Production downtime based on chuck malfunctions can thus be excluded.

The drawbar actuated **chuck series Type KA** is permanently oil filled to ensure a sealed-for-life lubrication. The rotational movements during grinding ensure an active lubrication of all the chuck's internal components. For this reason, these chucks require extremely low maintenance.

Advantages



- patented circulating lubrication system
- highly sensitive compensation mechanism
- extremely low maintenance

Function

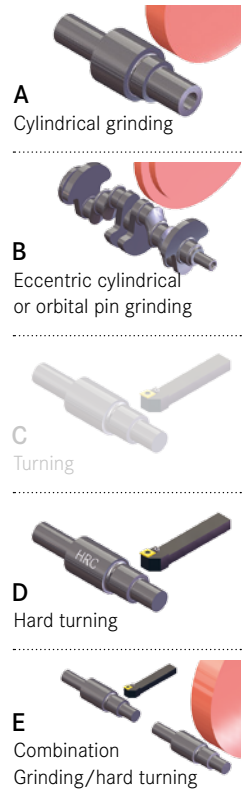


- hydraulically or drawbar actuated compensating chuck for clamping between centers
- 2, 3 or 4-jaw options available in different sizes
- engineered for grinding machines

PATENT EP1 190 815



Suitability according to machining process:



Explanation of symbols:
SwissChuck.com

 OVEKA

Type	Item	Number of jaws	Jaw stroke radial [mm]	Clamping force max. [kN]	Weight [kg]	RPM [1/min]	ø outside [mm]	Overall height ¹⁾ [mm]	Stroke index	suitable for
2OVEKA 140	CHX200786	2	5	15	10	1500	140	109		AB(DE)
3OVEKA 140	SX1013285	3	3	30	10	1500	143	109		AB(DE)
2OVEKA 170	SX1019165	2	5	15	16	2000	170	101		AB(DE)
4OVEKA 180	SX1002649	4	2	50	20	3000	180	118		ABDE
4OVEKA 206*	CHX100614	4	2	55	27	1000	206	118		AB
4OVEKA 206*	CHX100547	4	2	55	27	1000	206	118	•	AB
4OVEKA 270*	SX1005160	4	2	55	45	1000	270	118		AB
4OVEKA 270*	SX1000969	4	2	55	46	1000	270	118	•	AB

* For these types, a 10-year warranty can be registered

 KA

Type	Item	Number of jaws	Jaw stroke radial [mm]	Clamping force max. [kN]	Act. force [N]	Weight [kg]	Max. speed [1/min]	ø outside [mm]	Overall height ¹⁾ [mm]	suitable for
2KA 140	CHX201214	2	5	15	8000	10	2500	140	109	AB(DE)
3KA 140	SX1013460	3	3	20	20000	10	3000	143	109	ABDE
2KA 170	SX1019174	2	5	15	8000	16	2000	170	101	AB(DE)

1) Overall height = Distance from the locating face of the spindle flange to the mounting surface of the jaws

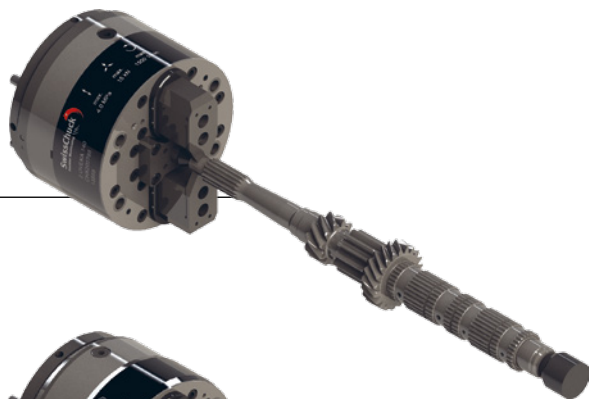
EXAMPLES OF APPLICATIONS

20VEKA 140

Gear shaft:

Clamping between centers of a gear shaft

- Grinding the outer diameters
- Typical application of grinding between centers
- High roundness and concentricity accuracy



3KA 140

Ball screw shaft:

Clamping of ball screw shafts between centers

- Grinding of the ball screw track
- Accurate and firm positioning of shaft to the center point
- Very short and thin-walled clamping location



20VEKA 140

Camshaft:

Clamping camshafts in the pitch circle of the gear profile

- Form grinding of the cam geometry
- Angular pre-alignment with special positioning mechanism
- Precise angular clamping in the pitch circle
- Top jaws with integrated tungsten carbide clamping pins



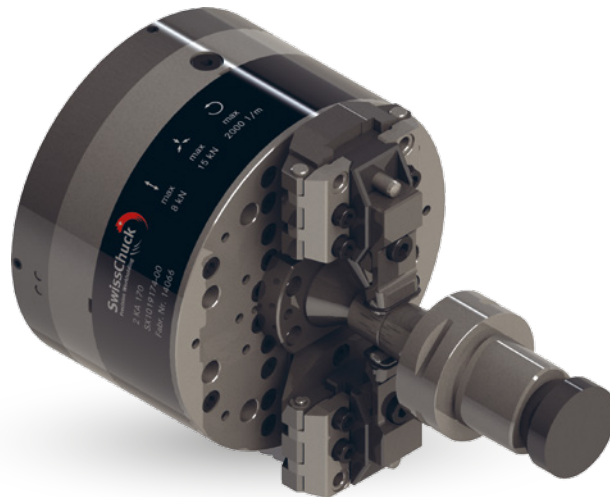
3KA 140

Shaft part of CVT gearbox:

Clamping CVT shaft component

- Grinding of cone and outer diameters
- Stable and powerful clamping
- High roundness, concentricity and axial run-out accuracies



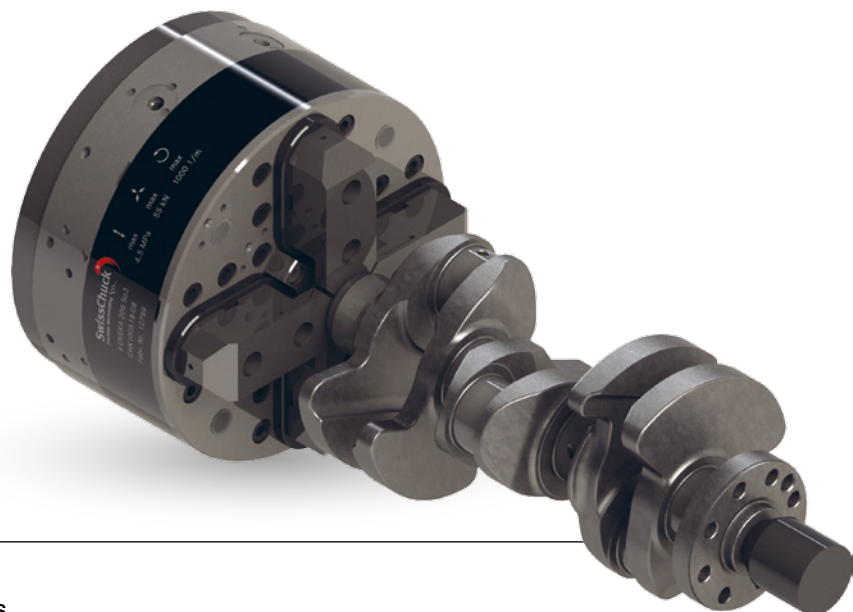


2KA 170

Capto tool holders:

Clamping of different Capto tool holders

- Grinding polygon and face
- Stable and powerful clamping
- High flexibility based on multiple adjustable jaw concept
- Minimum of interchangeable parts
- Only 2 sets of clamping jaws for the clamping range of \varnothing 10 to 80 mm
- Short changeover times
- Clamping on tapered diameters with compensation of angular differences



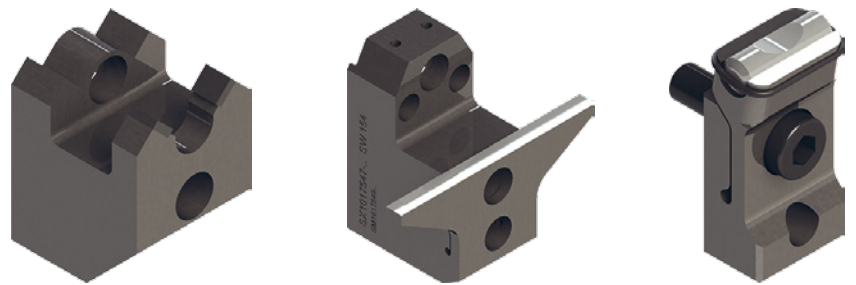
4OVEKA 206

Crankshaft:

Clamping of crankshafts between centers

- Grinding of crankpins and main bearing journals
- Generally suitable for automotive crankshafts (up to 6 cylinders)
- Meets highest requirements for roundness, concentricity, run-out and axial run-out accuracies
- Low-maintenance operation; ideal for high-volume production
- Chuck with very low life cycle costs

ACCESSORIES



TOP JAWS

The top jaws are designed workpiece specific by SwissChuck. In this way, the clamping function of the chuck will be perfectly transferred to the workpiece. The generally hardened jaws can be given an additional PVD coating at the clamping contact locations. This permits an even higher transmission of torque, or alternatively, the clamping force for sensitive workpieces can be reduced.



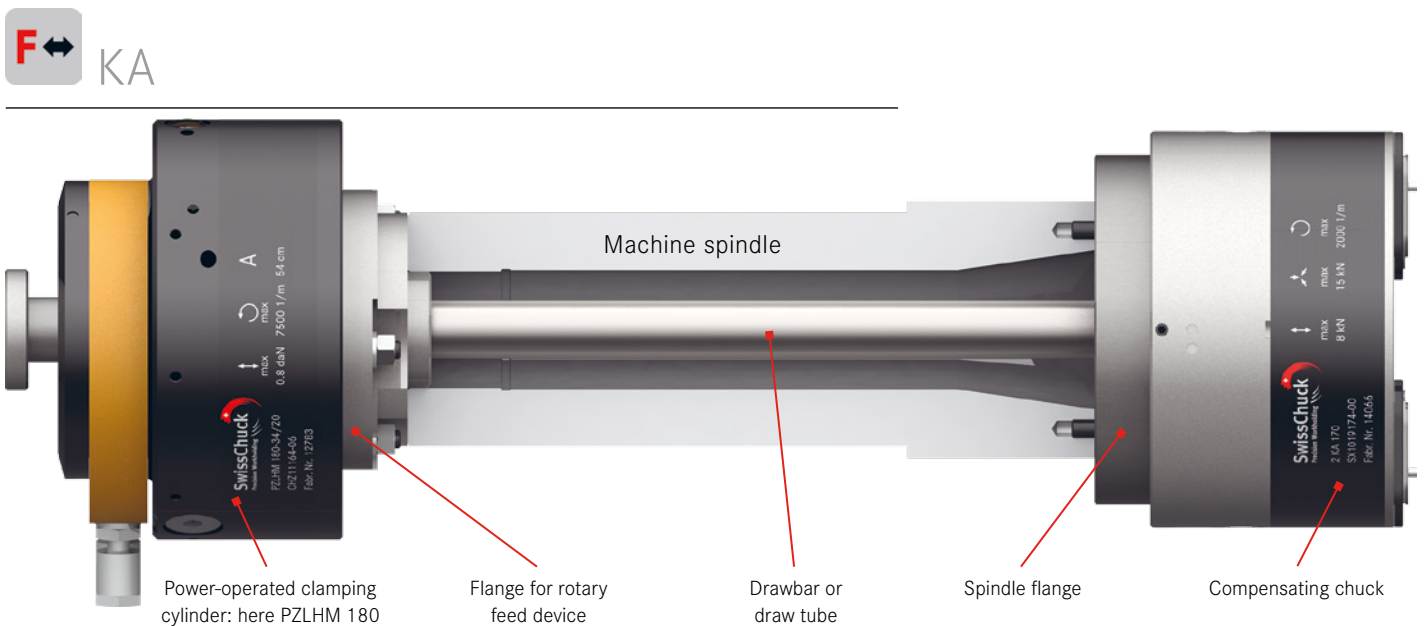
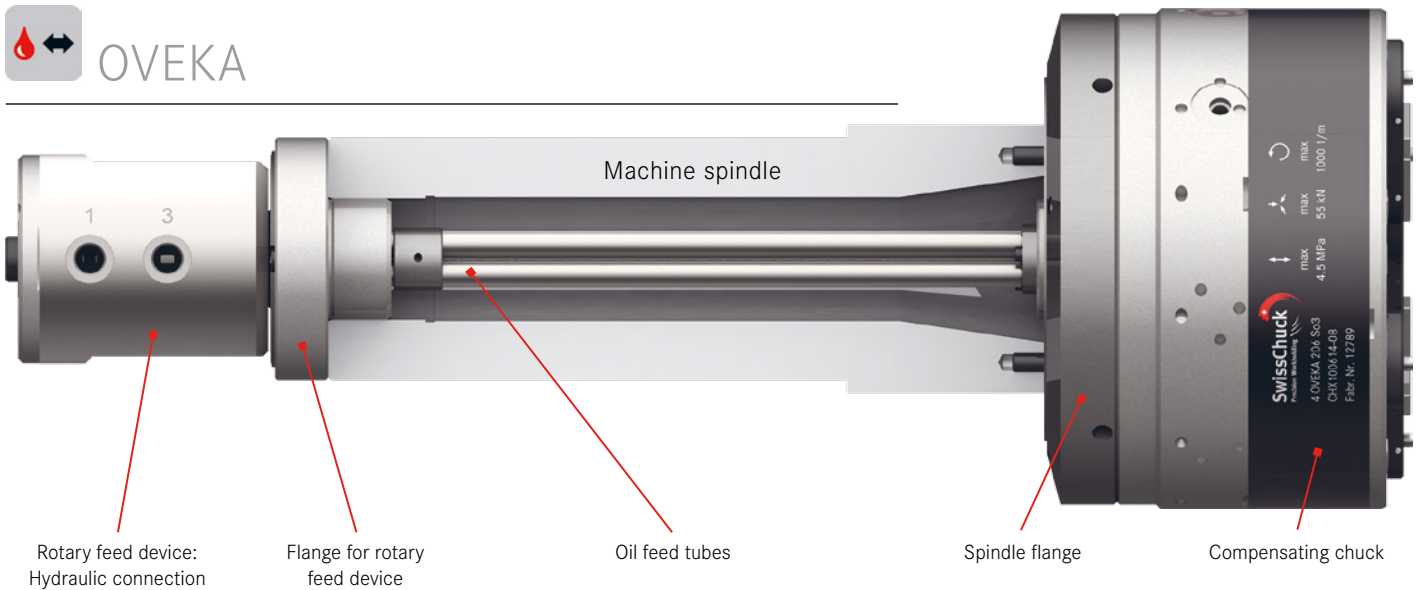
CENTER POINTS

As a rule, the wear-resistant center points are fitted with tungsten carbide inserts. The conical or spherical centers are designed and produced according to requirements. Some chucks are equipped with specifically produced tapered holders. The center points are produced according to specific gauges and can be installed with micrometer precision. The center point does not need to be aligned.

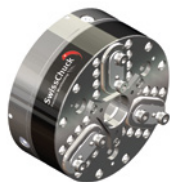
SPECIAL SOLUTIONS

The compensating chuck range covers a wide range of applications. Nevertheless, there may be a need for customized solutions. SwissChuck develops special solutions that are tailored to the functional specifications of either the machine builder or the end user.

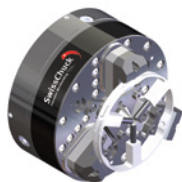
MOUNTING EXAMPLES



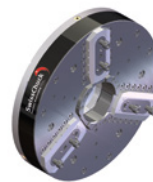
The chuck is specifically mounted according to the machine type, SwissChuck designs and provides all the required components. Hence, our customers will receive the entire workholding unit ready for installation.



KCHP/VKHP
High-precision force chuck



SAP to KCHP
Automated drive carrier



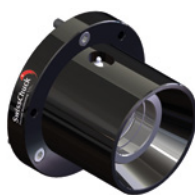
KFHP
Precision power chuck



KHSF
Centrifugal force chuck



VMCHP
Diaphragm chuck



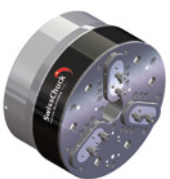
LZK/LSK-S
Collet chuck with clamping lamellas



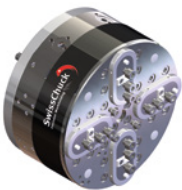
DL
Collet expanding mandrel



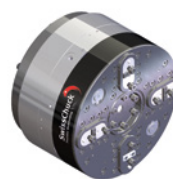
TGC/FTGC
Tool chuck



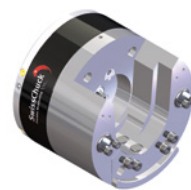
OVEK
High-precision force chuck



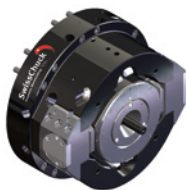
OVEKA
Compensating chuck



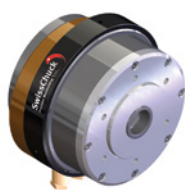
OVEKAV
Moving compensating chucks



FLD/AFLD
Twist finger type console chuck



SPECIAL SOLUTIONS
Tailor made solutions



PZLHM
Pneumatic force clamping cylinder



TRITON
Precision lathe chuck

SwissChuck AG
Industriestrasse 3
CH-8307 Effretikon
P +41 52 355 31 31
F +41 52 343 52 40
SwissChuck.com



Service@SwissChuck.com



Sales@SwissChuck.com

