



ATLING STEADY REST





- Founded 1947 in Ockelbo, Sweden
- First steady rest produced in 1972
- Own factory & production
- Global distributor network
- Head Quarter in Ockelbo
- Part of Inducore Group



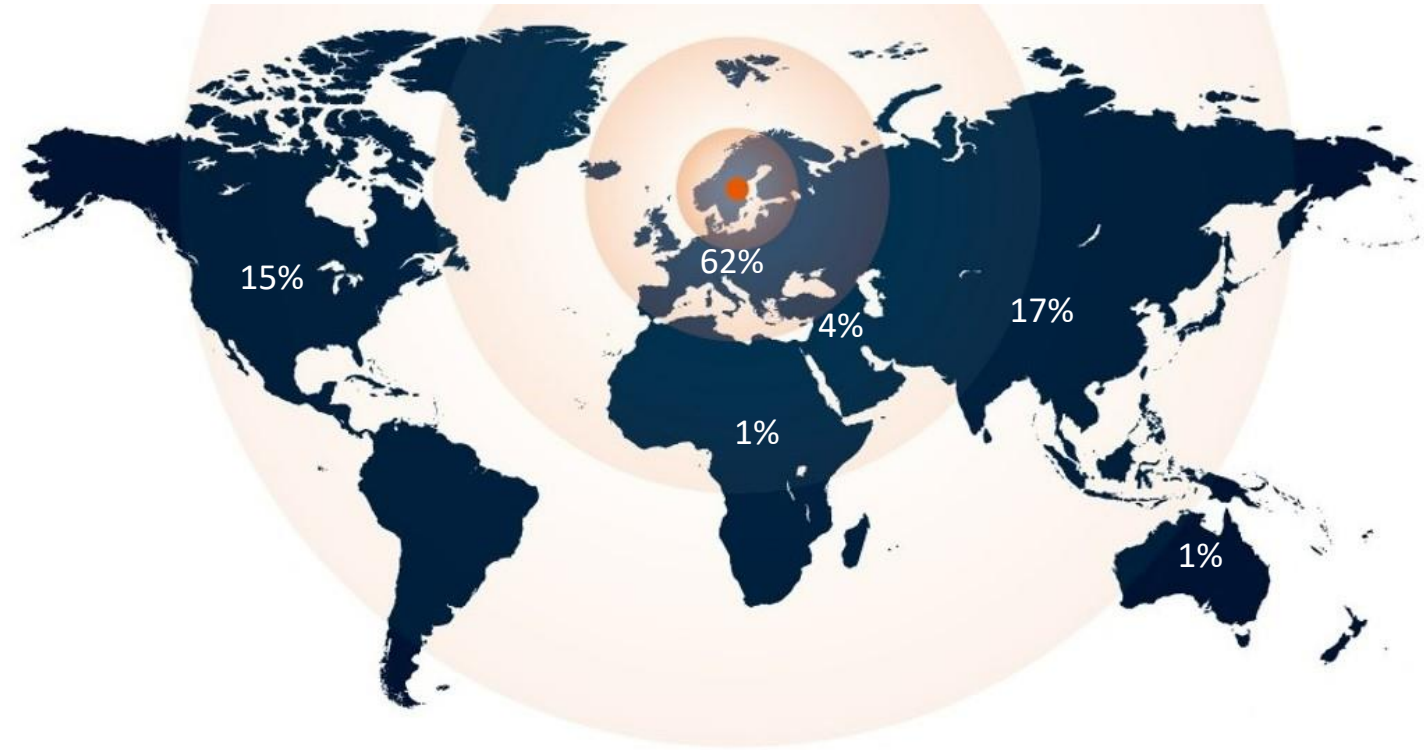
The Inducore Group

Inducore AB <i>130 MEUR, 700 employees</i>		
Truck Bodies	Components	Systems Solutions
Sörling IIsbo	Atling	Arenco
PLS	Bollnäs, BVP	Arenco Shanghai
Norfrig	Lemont	HIAK
Sala Truck Service	Logweld	
	Svanströms	
	Axipto	



Sales World Wide

- Europe 62%
- Asia 17%
- America 15%
- Middle East 4%
- Africa 1%
- Oceania 1%



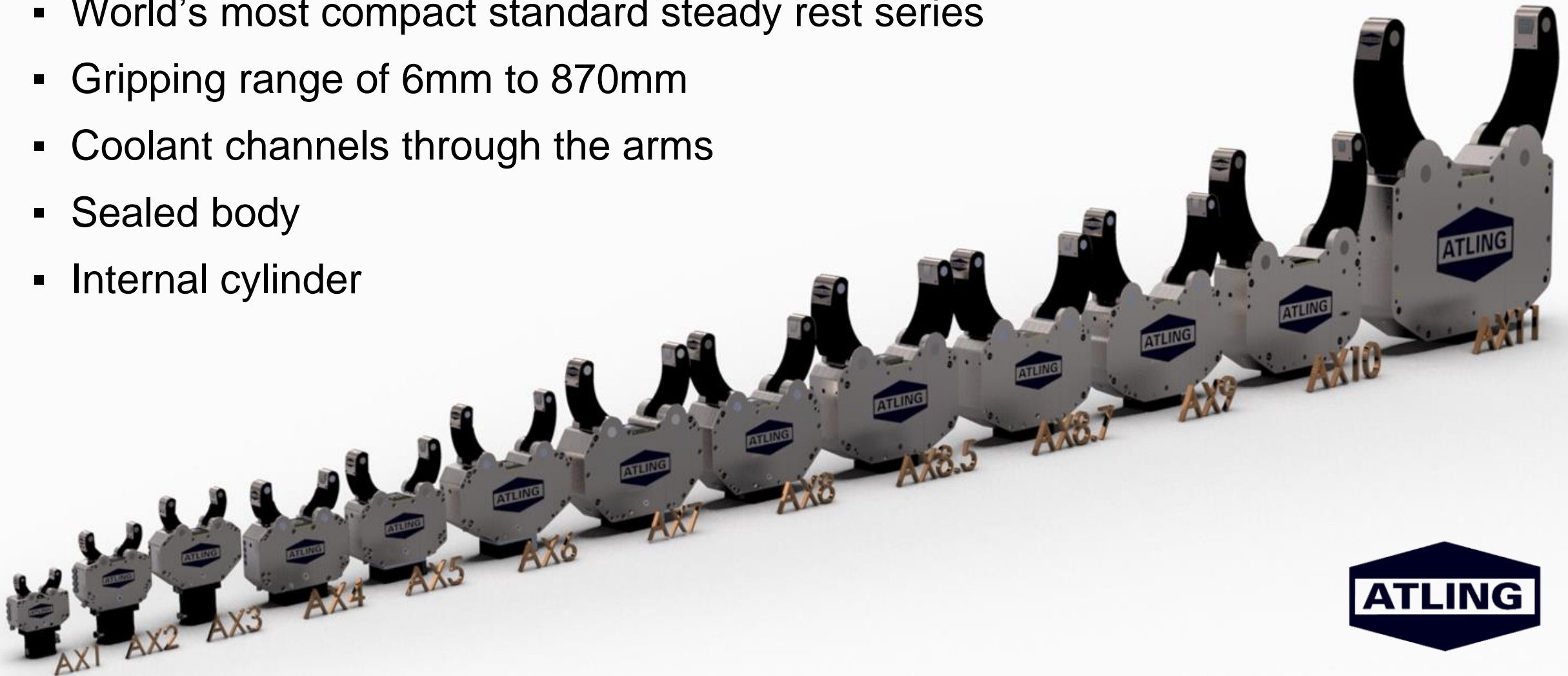
Distributor Network

- England
- France
- Germany
- Japan
- Poland
- Spain
- USA
- Scandinavia
- The Netherlands
- Turkey



Atling Steady Rest Series

- World's most compact standard steady rest series
- Gripping range of 6mm to 870mm
- Coolant channels through the arms
- Sealed body
- Internal cylinder

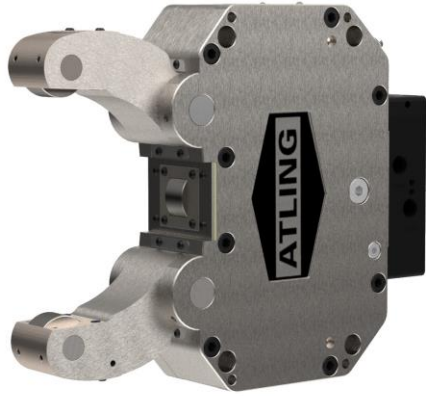


Atling Steady Rest Series

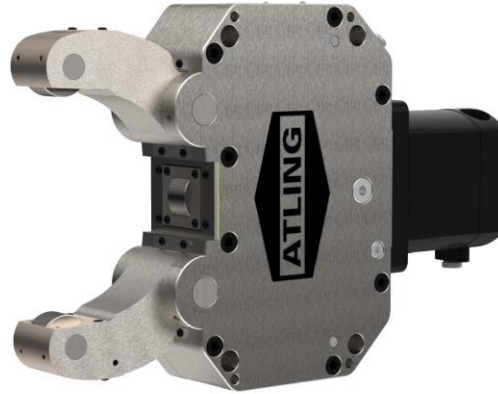
- One Atling steady rest can replace 2 from a competitor
AX5 = SLU3.1 + SLU3.2
- Fits all SLU-made brackets up to SLU5.1
- Extra open arm without compromising size and gripping range
- Internal or external cylinder
- All features included in standard design
 - Internal cylinder, coolant channels through the arms, sealed body, interchangeable track plates



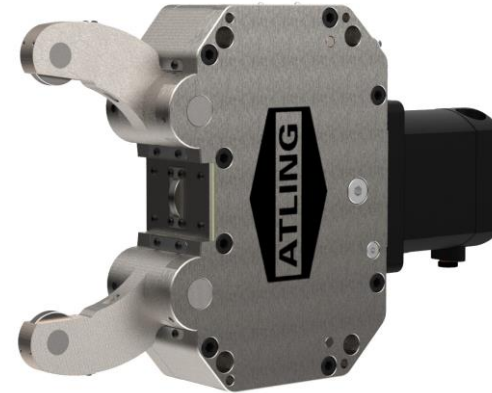
Our Standard Products



AXI – Internal Cylinder



AXE – External cylinder



ANE – Narrow arms



ASI – Adapted hole pattern for SLU



ASE – Adapted hole pattern for SLU



Zero Point Clamping Bracket



External and Internal Cylinder

- The same housing, arms, track plates, links etc.
- Same clamping force and characteristics
- Different cylinder and middle piece



Internal cylinder
- AXI



External cylinder
- AXE

Internal Cylinder

- Available from size 4
- Same gripping range
- Same standard features
- Less space needed



ATLING

Customized Steady Rests

Examples:

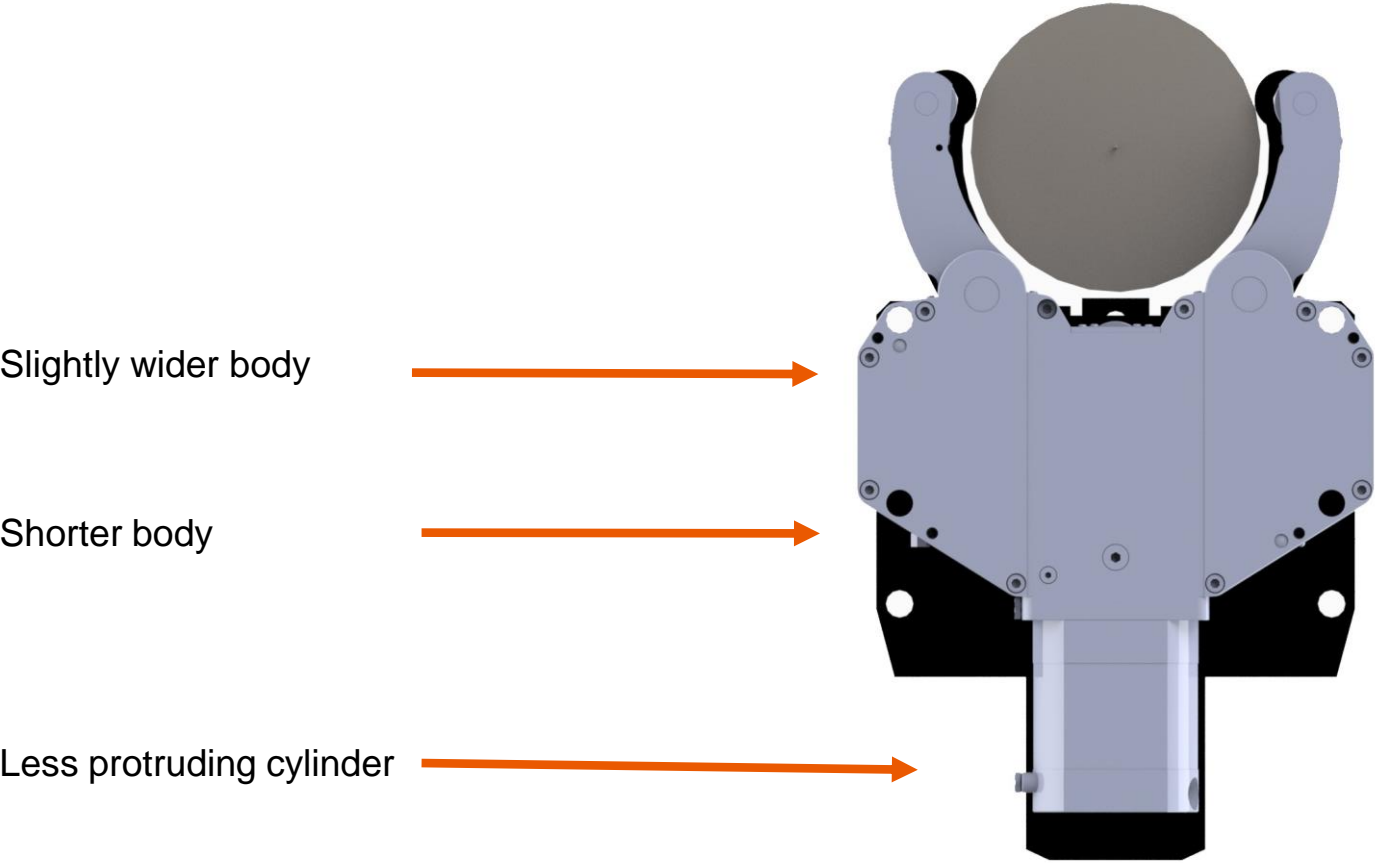
- Extended gripping range
- Pneumatic cylinder
- Coolant driven cylinder
- Maximized clamping for specific machine
- Narrow arms
- Wide rollers
- Diamond pads
- Rubber/plastic rollers



Atling vs. Competitors – External Cylinder

AX6 (ø30-255mm)

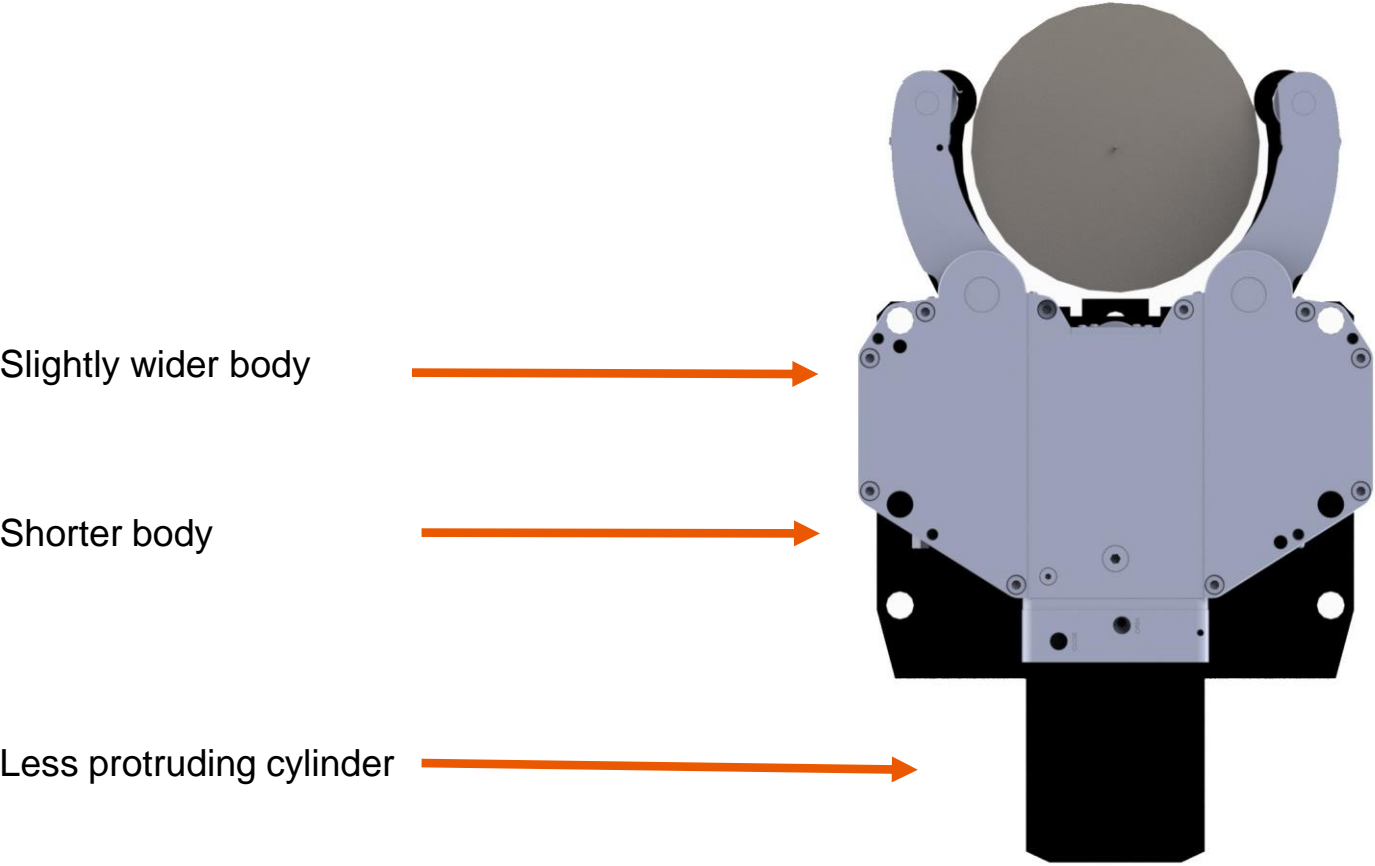
SLU4 (ø30-245mm)



Atling vs. Competitors – External Cylinder

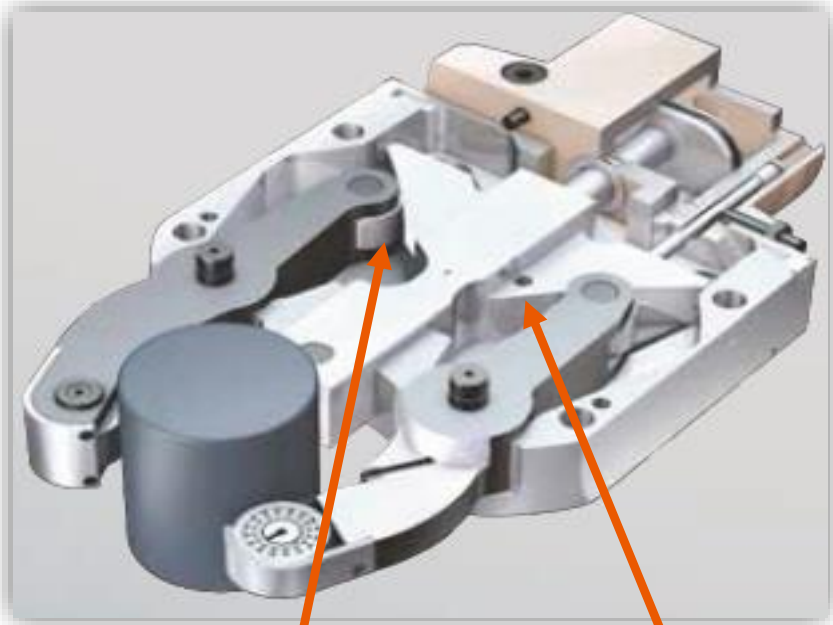
AX6 (ø30-255mm)

SLU4 (ø30-245mm)



Atling vs. Competitors

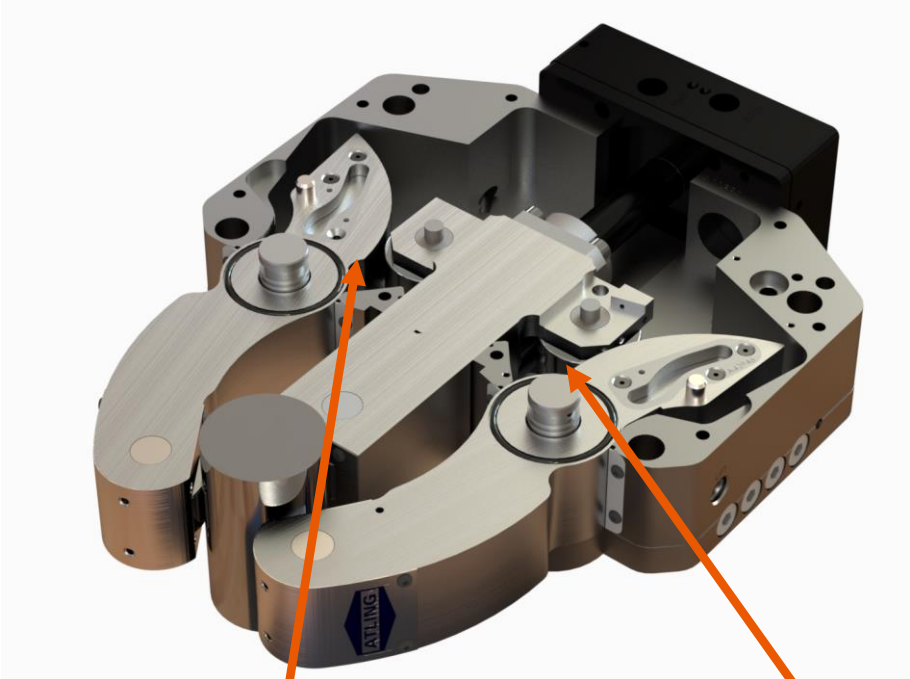
Competitor



Roller on arm

Cam curve on middle piece

Atling



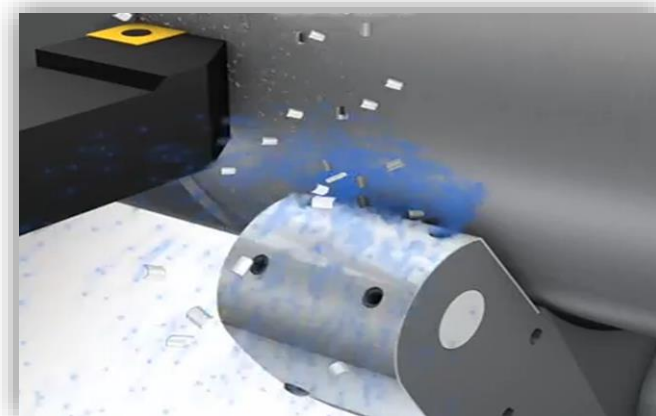
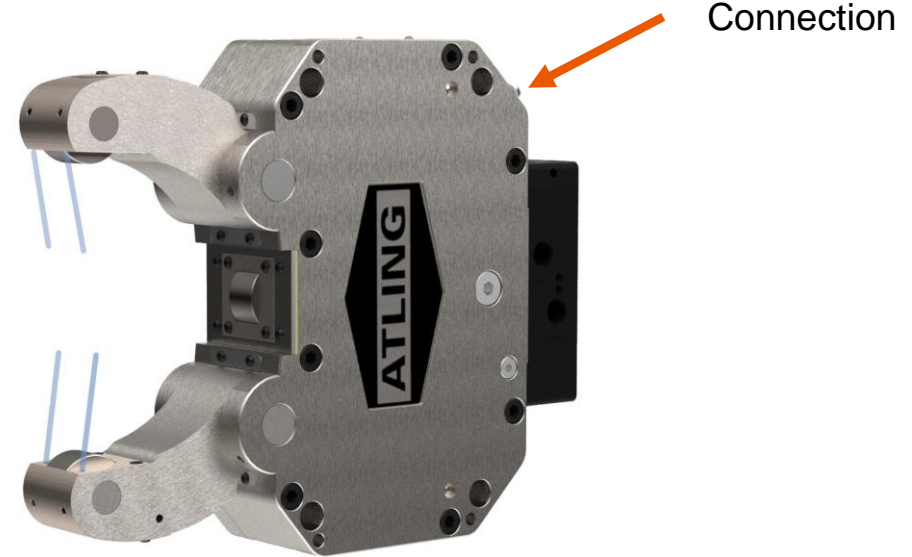
Cam curve on arm

Roller on middle piece



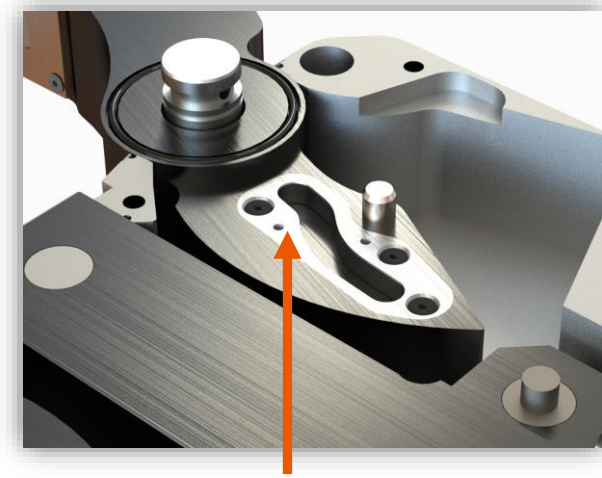
Coolant through the arms

- Included in standard program
- Protects rollers and work piece
- Longer roller lifetime
- Better surface on work piece



Track Plates

- Unique patented Atling solution
- Standard or Extra Open Arm
- Symmetrical and same for both arms
- Can be added or changed even after delivery
- Does not affect gripping range

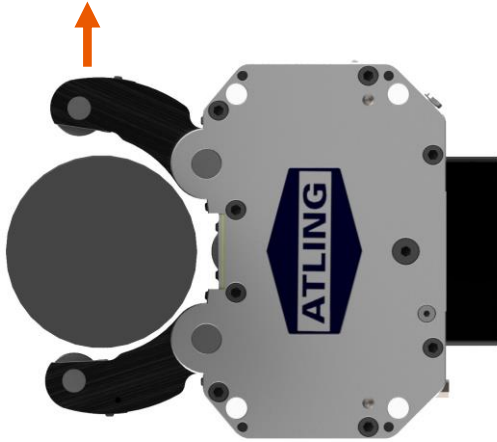


Track plate for extra open arm

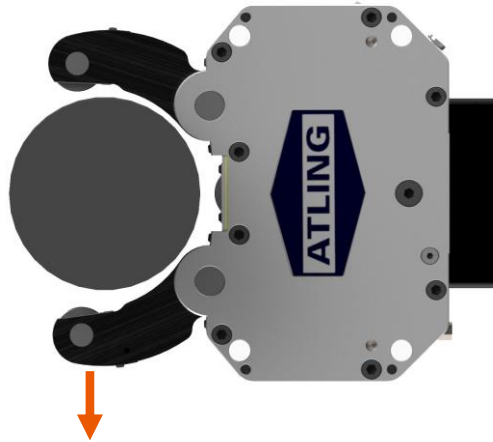


Extra Open Arms

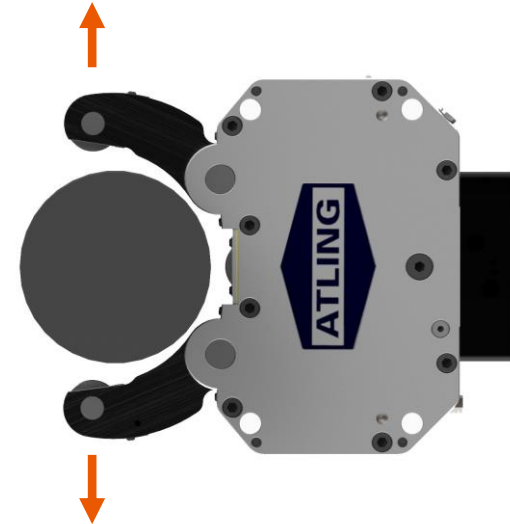
Upper arm



Lower arm



Both arms



ATLING Vs. Competitors - Comparison Sheet (Extra Open Arm)				
Atling Steady Rest	Gripping Range	Competitor	Gripping Range	Difference
AX1	ø6-70	Size-1	ø4-52	33%
AX2	ø8-105	Size-2	ø8-80	35%
AX4	ø12-160	Size-3	ø12-130	25%
AX5	ø20-200	Size-3.1	ø20-150	38%
AX6	ø30-255	Size-4	ø30-220	18%
AX7	ø45-320	Size-5	ø45-268	23%

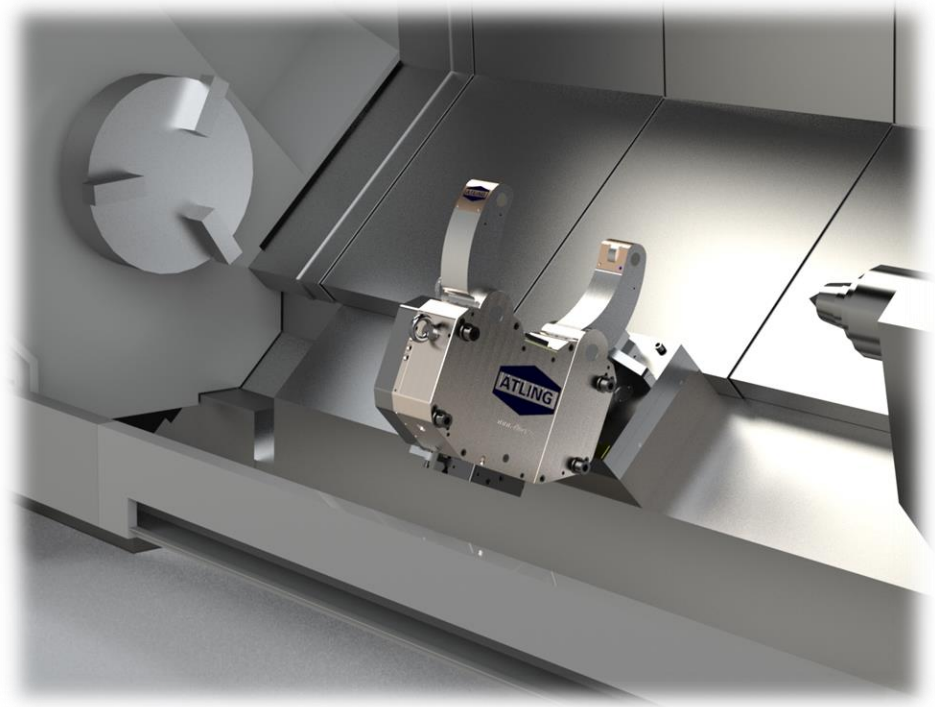
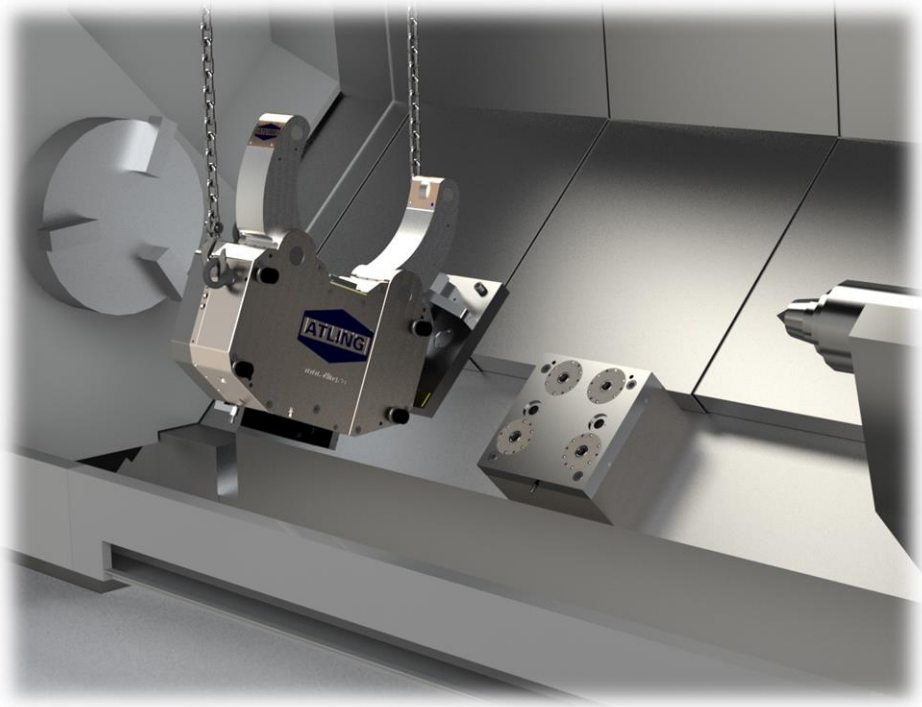


Zero Point Clamping Bracket



- Repeatability of 0.0025mm
- Less time spent on mounting and dismounting
- More space in the machine.
- Repeatability with zero re-adjusting.
- Customizable for any machine

Atling Zero Point Clamping Bracket



From hours to minutes





QUICK RELEASE MOUNTING BRACKET

with high accuracy

Steady Rest Accessories

Standard Workpiece Wiper
Manually adjusted



Resilient Workpiece Wiper
Automatically adjusted



Eccentric fine adjustment shaft



Brackets and Fastenings

- Adapted to customer specifications
- Customized for any machine model
- Made by Atling's mechanical design team





www.atling.com